

# Dekwall



**Fascinating walls**  
with the comfort of cork

Nature around you



### **Excellence in covering solutions**

Amorim Revestimentos, the worldwide market leader of cork coverings, places nature on the starting point for a better future, investigating and creating covering solutions that, without affecting the environment, ensure a higher quality of life.

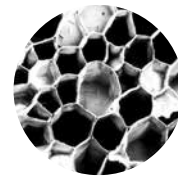
Being present in more than 51 countries, Amorim Revestimentos' International covering portfolio and brands, are known throughout the world as pioneers in creating top-quality, ground-breaking solutions.

Wicanders®, Amorim Revestimentos' premium brand, has been producing covering solutions since 1868, always inspired on nature's most pure values and using avant-garde technologies to provide high quality, ecologic and stylish products.

### **Cork - A truly nature's miracle**

Cork comes from the bark of the cork oak tree. It is removed from the trunk by hand without ever damaging the tree. Every year a new bark grows making it a renewable and sustainable resource. Cork is ideal in terms of the ever increasing demand for conservation of natural resources.

It has unique and incomparable qualities which no ingenious human has yet managed to copy or improve. Cork is made of 40 millions cells per cm<sup>3</sup> resembling a "honeycomb structure" which protects the tree from weather temperatures sharp changes. Each cell functions as a miniature natural thermal insulator and also provides above standard sound insulation and shock absorber properties.



Microscopic photo of cork

The exclusive natural qualities of cork make it ideal to use in coverings as it reduces sound, and provides an optimal temperature throughout the year.



# The essence of cork wall coverings

## AMAZING INTERIOR DESIGN

Perfection and harmony can only be found in nature. The cork fascinating and distinct natural shapes give a special touch to interior wall decoration, creating unique spaces full of style and charm.



## A WARM RESORT

The unique thermal insulation features of cork provide an optimal wall temperature all year round, assuring a warm and comfortable ambience with energy cost savings.



## AN OASIS OF SERENITY

Cork's natural properties make it an excellent sound absorber. It reduces noise transmission between and within rooms, creating a quieter, peaceful and welcoming environment in your home.



## COVERED WITH NATURE

Dekwall by Wicanders is exceptional among wall coverings, combining the design of distinct textures and forms with all the comfort of cork. A natural and ecological product, that is very pleasant to touch.



## ENDURING BEAUTY

Cork cells are also crush-resistant. Cork has natural memory and will bounce back from hard impacts, retaining its elasticity. These properties create a very durable product, preserving a perfect look for many years to come.



# Alabaster

## Cosy elegance

This graceful visual with rich cork textures is perfect to create elegant and delightful ambiances. Alabaster collection blends the desire of well-being with contemporary beauty.



**Alabaster Chalk**  
TA10001 - 600 x 300 x 3,0mm  
Finishing: Varnish

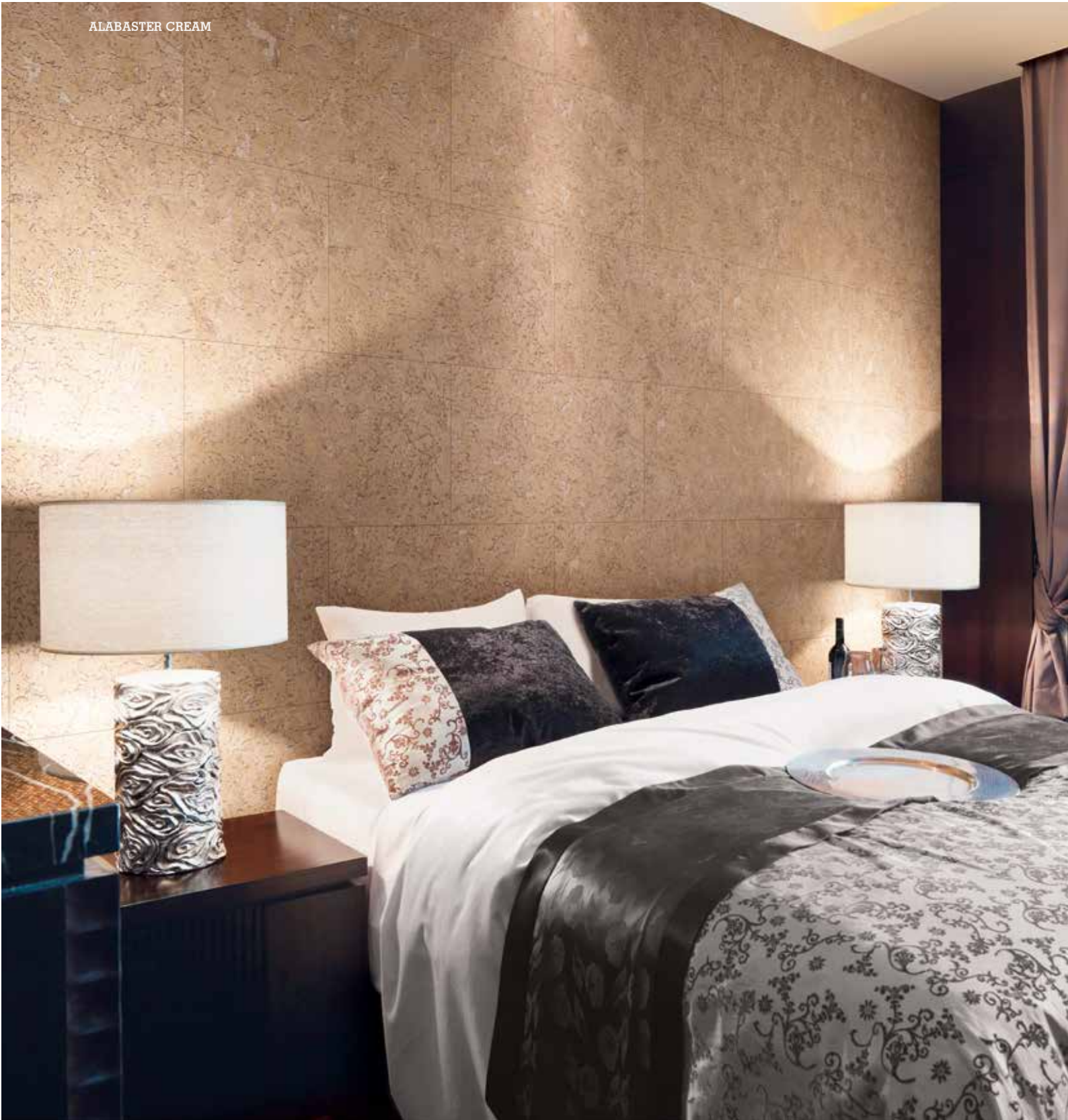


**Alabaster Porcelain**  
TA12001 - 600 x 300 x 3,0mm  
Finishing: Varnish



**Alabaster Cream**  
TA11001 - 600 x 300 x 3,0mm  
Finishing: Varnish

**ALABASTER CREAM**



# Bamboo

## Exotic beauty

The beauty of this collection upgrades the singular look of bamboo into an incomparable stylish design. This linear bamboo visual brings an original touch of exotic beauty to the atmosphere, creating spaces full of harmony and sophistication.

BAMBOO TERRA





**Bamboo Terra**  
TA04001 - 600 x 300 x 3,0mm  
Finishing: Varnish



**Bamboo Artica**  
TA01001 - 600 x 300 x 3,0mm  
Finishing: Varnish



**Bali**  
RY48001 - 600 x 300 x 3,0mm  
Finishing: Wax

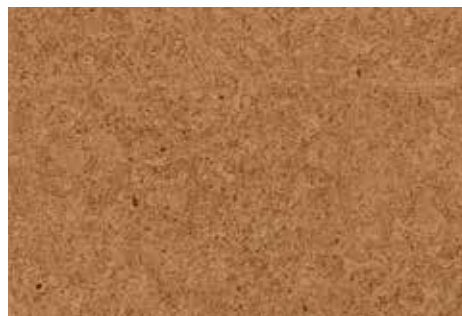


**Bamboo Toscana**  
TA05001 - 600 x 300 x 3,0mm  
Finishing: Varnish

# Cayman

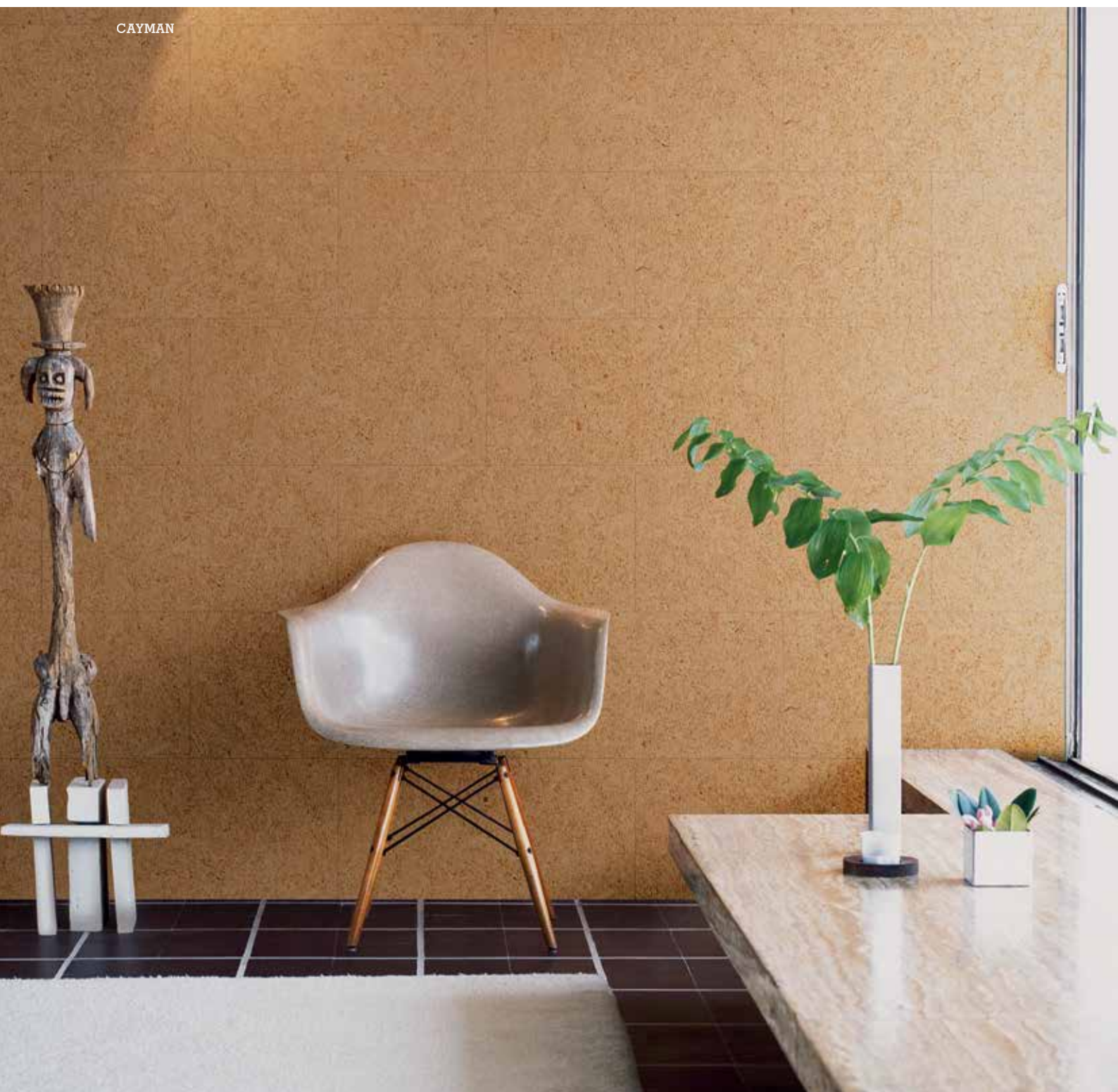
## Cosy and relaxed

The blended design of Cayman was created to infuse a warm touch of natural serenity into interior decors. The small organic forms of cork, appeal to our senses and capture the cosy essence of nature.



**Cayman**  
RY56001 - 600 x 300 x 3,0mm  
Finishing: Wax

CAYMAN







FLORES



**Flores White**  
RY07001 - 600 x 300 x 3,0mm  
Finishing: Wax

## Flores

### **Natural sophistication**

The natural texture of Flores is emphasized through a delicate white tone which is perfect to add natural sophistication into modern or even more minimalist decoration styles.

# Fiord

## Luxurious personality

This luxurious visual with big random virgin cork portions will create expressive and charming interiors. A modern-day collection that exudes tastefulness.



FIORD WHITE



**Fiord Natural**  
RY15001 - 600 x 300 x 3,0mm  
Finishing: Wax



**Fiord White**  
RY19001 - 600 x 300 x 3,0mm  
Finishing: Wax

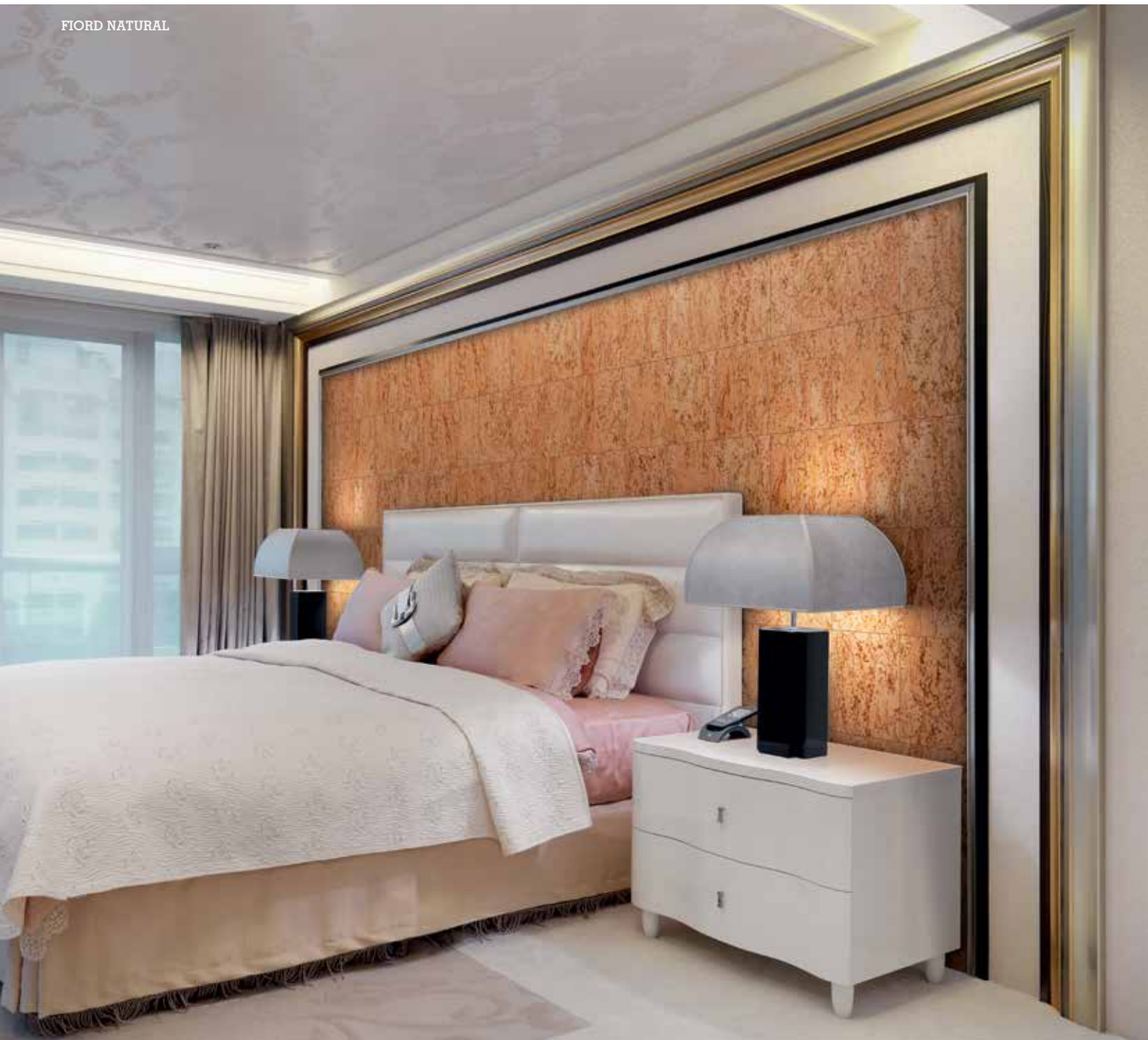


**Fiord Exclusive**  
RY19002 - 600 x 300 x 3,0mm  
Finishing: Wax

FIORD EXCLUSIVE



FIORD NATURAL



# Hawai

## Organic character

Unique effects and shapes suggest the return to nature through spaces steeped in organic sensations. The stunning textures of Hawai will enrich the personality of contemporary decors.

HAWAI NATURAL





**Hawai Natural**  
RY11001 - 600 x 300 x 3,0mm  
Finishing: Wax



**Hawai Exclusive**  
RY77001 - 600 x 300 x 3,0mm  
Finishing: Wax



HAWAI EXCLUSIVE

# Hawai

## Organic character

Combined with contrasting base colours, Hawai visuals are enhanced and get dressed with a more expressive fresh modern look.



**Hawai White**  
RY77002 - 600 x 300 x 3,0mm  
Finishing: Wax

## HAWAI BLACK PLATINUM





**Hawai Black Pearl**  
 RY1F001 - 600 x 300 x 3,0mm  
 Finishing: Wax



**Hawai Black Oyster**  
 RY1G001 - 600 x 300 x 3,0mm  
 Finishing: Wax



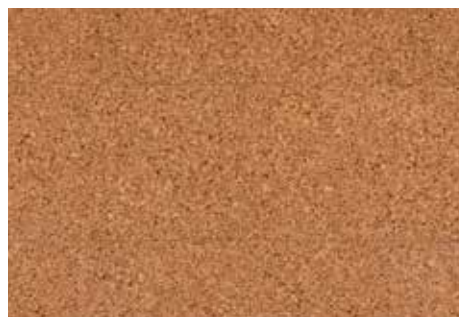
**Hawai Black Platinum**  
 RY1H001 - 600 x 300 x 3,0mm  
 Finishing: Wax



# Iberia

## The essence of cork

Created for those who love the sensation of warmth and confort, Iberia represents the essence of cork for traditional and embracing atmospheres.



**Iberia**  
RY05001 - 600 x 300 x 3,0mm  
Finishing: Wax







MELVILLE

# Melville

## Refined rustic

Based on a refined cork visual, Melville is the ideal choice if you are aiming for timeless beauty. Rustic designs are trending in modern interior decoration, and Melville results in an inviting and captivating atmosphere.



**Melville**  
RY40001 - 600 x 300 x 3,0mm  
Finishing: Wax

# Stone Art

## Spaces of Glamour

Stone art recreates the stone surface texture with a majestic and warm cork veneer. This collection will turn spaces into a statement of elegance and glamour.





**Stone Art Pearl**  
TA23001 - 600 x 300 x 3,0mm  
Finishing: Varnish



**Stone Art Oyster**  
TA22001 - 600 x 300 x 3,0mm  
Finishing: Varnish



**Stone Art Platinum**  
TA24001 - 600 x 300 x 3,0mm  
Finishing: Varnish



# Malta

Contemporary sophistication

A traditional look with modern colors and state-of-the-art technology was the perfect combination to create this contemporary new collection. Malta is very versatile: it gives tastefulness to a modern ambiance and brings sophistication to a simple décor.

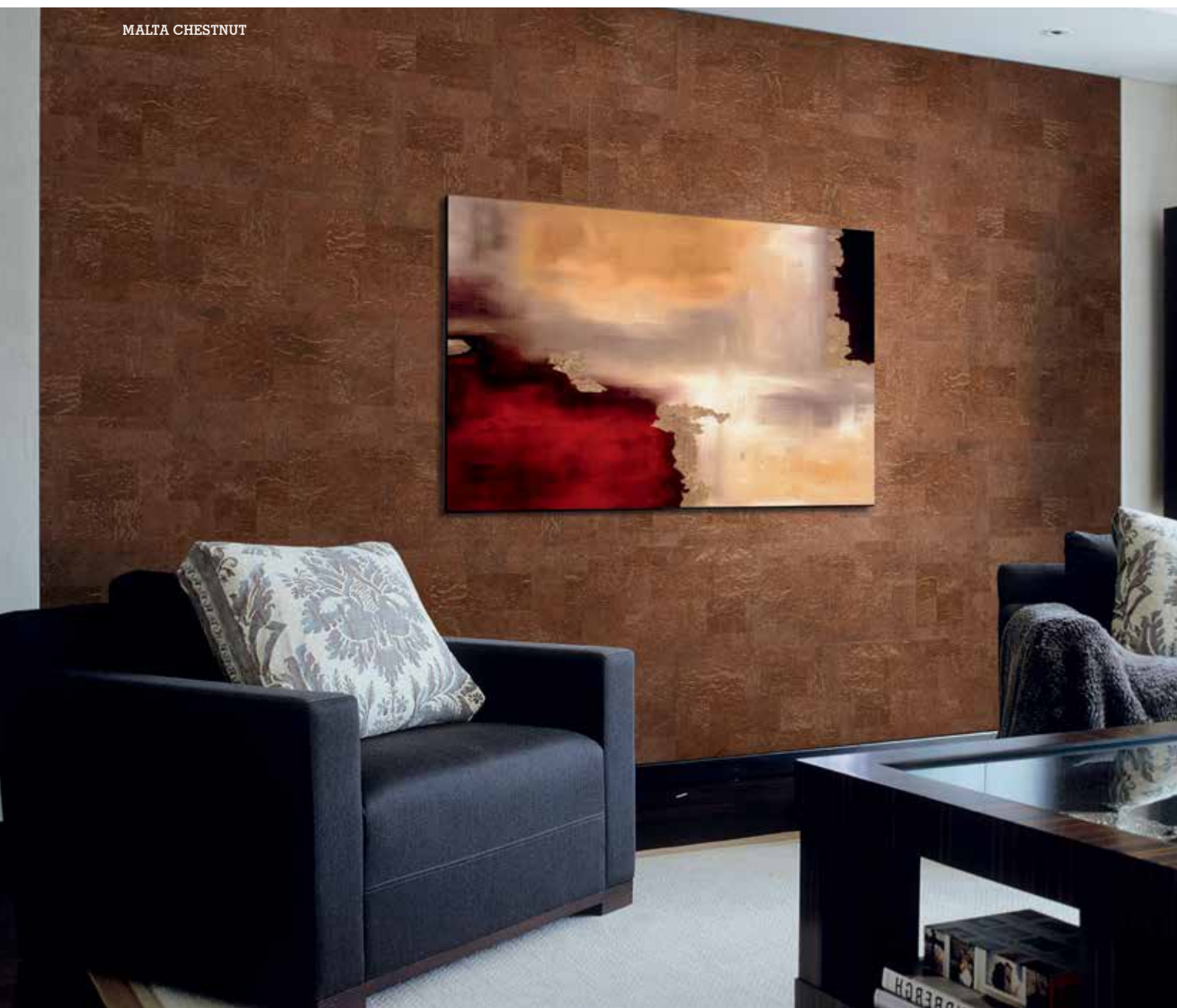


**Malta Chestnut**  
RY1L001 - 600 x 300 x 3,0mm  
Finishing: Wax



**Malta Moonlight**  
RY1N001 - 600 x 300 x 3,0mm  
Finishing: Wax

MALTA CHESTNUT





**Malta Platinum**  
RY1K001 - 600 x 300 x 3,0mm  
Finishing: Wax

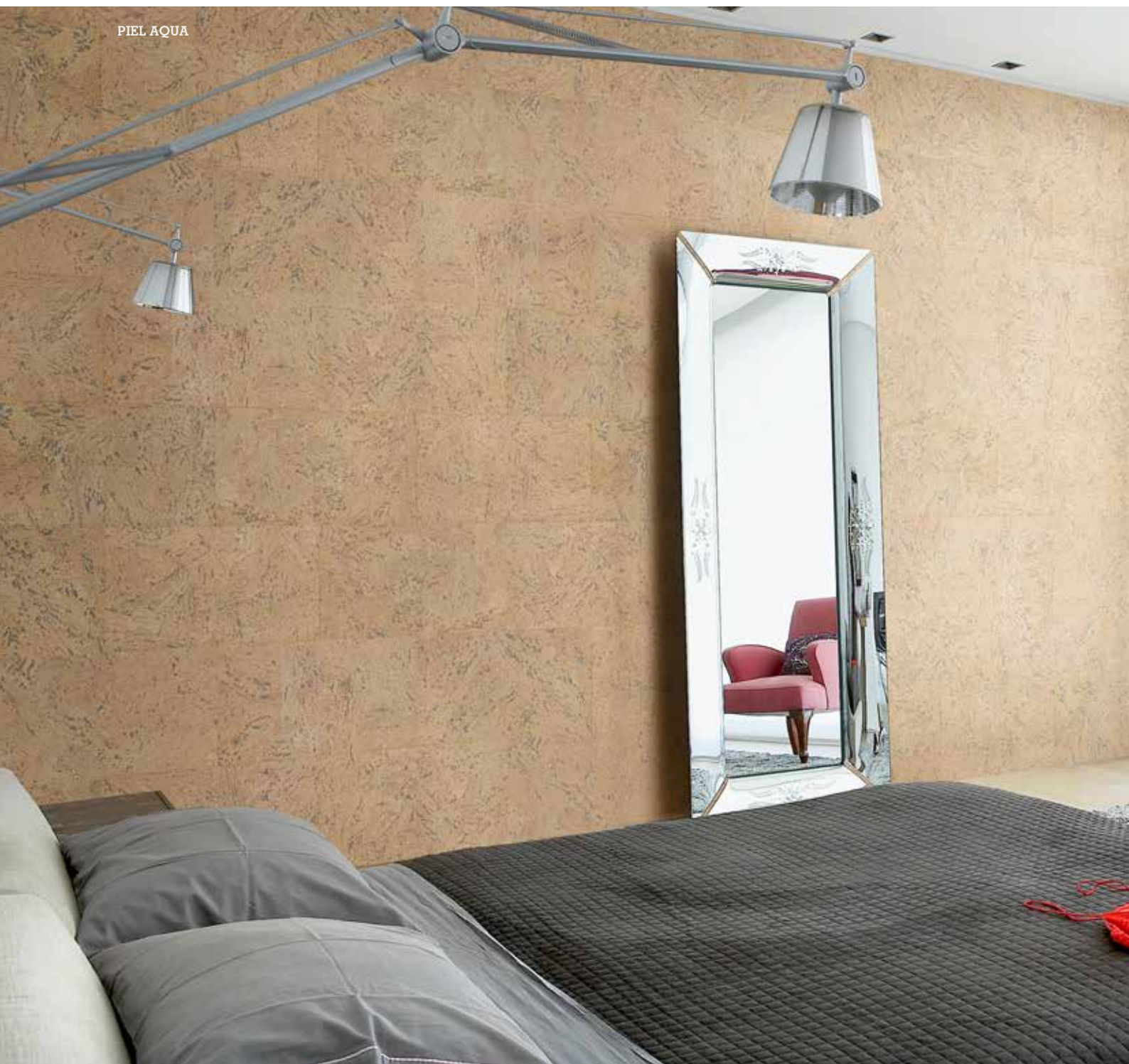


**Malta Champagne**  
RY1M001 - 600 x 300 x 3,0mm  
Finishing: Wax

# Piel

Natural peacefulness

Piel collection has a captivating visual that makes any room involving and fashionable at the same time. This style exudes a natural peacefulness, perfect for relaxing.



PIEL AQUA



**Piel Aqua**  
RY1J001 - 600 x 300 x 3,0mm  
Finishing: Wax



**Piel Nut**  
RY1I001 - 600 x 300 x 3,0mm  
Finishing: Wax



# Think green **choose** Wicanders®

Wicanders® is a truly sustainable brand! Produced by Amorim, it represents a unique balance between the creation of wealth and the protection of the environment. The starting point is a raw material that is extracted cyclically from the cork oak trees without ever damaging them. This raw material is then transformed into high value-added products while promoting the economic and social sustainability of areas at risk of desertification.

Several eco-efficiency studies, based on a comparative analysis with several other types of flooring, illustrate the excellent environmental performance of Wicanders® products and its manufacturing process. Besides the smaller amounts of energy and raw materials required for the manufacturing process, these products actively contribute to reducing global warming, not only through their low emissions, but also due to cork's natural property of retaining CO<sub>2</sub>.

It is estimated that the Portuguese cork oak forest – montado – is responsible for retaining 5% of the country's annual CO<sub>2</sub> emission, representing 4.8 million tons per year.





## The importance of Cork Oak

The Cork Oak (*Quercus Suber L.*) is a tree belonging to the Oak family from which Cork is extracted. Its value is based not only on the products extracted from the tree, but on all of the agricultural, forest, pastoral and hunting activities that revolve around the cultivation of the Cork Oak.

Regular extraction of the Cork (a process called stripping) is a fundamental contribution for environmental, economic and social sustainability in the rural areas of the Mediterranean region where the Cork Oak may be found.

The Cork tree is a slow growing tree, which may live for 200 years, which allows it, on average, to be stripped 16 times during its lifetime. The first extraction of cork from the Cork Oak tree occurs only 25 years after planting, following which it is harvested in 9 year cycles, without ever damaging the tree in any way. This method allows the cork oak forest to fulfill its role of fixing CO<sub>2</sub>, thus actively contributing to reduce global warming.

The Cork forest in Portugal (700.000 hectares), known as "Montado", is a typical Iberian Landscape which is key in supporting a natural bio-diversity, including some of the most endangered species in the world: Iberian Lynxes, Imperial Eagles', Black Storks, Wolves and Wild Bears.



**A  
GIFT  
FROM  
NATURE**

# Technical solutions

## Technical Data Sheet

Dimensions Available	Standard - Test Method	Unit	600x300x3mm	
			Result	
			Wax	Varnish
Dimensions	EN 427	mm	600 ± 0.5% 300 ± 0.5%	
Squareness	EN 427	mm	600: < 1.0mm 300: < 0.5mm	
Thickness	ISSO 7322	mm	3.0 ± 0.3%	
Apparent density	EN 672	Kg/m <sup>3</sup>	≥ 200	
Dimension stability	EN 434	%	≤ 0.4	
Curling	EN 434	mm	≤ 6	
Moisture content	EN 12105	%	≤ 7	
Formaldehyde	EN 12149, method C	mg/Kg	≤ 95	
Vinyl Chloride Monomer (VCM)	EN 12149, TEST B	mg/Kg	≤ 0.2	
Thermal resistance	EN 12667	m <sup>2</sup> K/w	0.0583	0.0572
Reaction to Fire	EN 13501-1	Class	E <sub>sg</sub> , d0	D <sub>sl</sub> , d0
Sound Absorption	ISO 354	<b>α<sub>w</sub></b>	0.10	
Release of heavy metals and specific elements	EN 12149		fulfilled	



## READY TO USE

- 1 Protective Finish (Wax or Varnish)
- 2 Genuine cork veneer
- 3 Cork agglomerate core



## Product Selector

Dekwall		
	WAX	VARNISH
Thickness (mm)	3	3
Dimension (mm)	600x300	600x300
Commercial Reference		
Bali	RY48001	
Iberia	RY05001	
Melville	RY40001	
Cayman	RY56001	
Flores White	RY07001	
Malta Platinum	RY1K001	
Malta Chestnut	RY1L001	
Malta Champagne	RY1M001	
Malta Moonlight	RY1N001	
Hawai Natural	RY11001	
Hawai White	RY77002	
Hawai Exclusive	RY77001	
Hawai Black Pearl	RY1F001	
Hawai Black Oyster	RY1G001	
Hawai Black Platinum	RY1H001	
Fiord Natural	RY15001	
Fiord White	RY19001	
Fiord Exclusive	RY19002	
Piel Nut	RY11001	
Piel Aqua	RY1J001	
Stone Art Oyster		TA22001
Stone Art Platinum		TA24001
Stone Art Pearl		TA23001
Alabaster Porcelain		TA12001
Alabaster Cream		TA11001
Alabaster Chalk		TA10001
Bamboo Artica		TA01001
Bamboo Toscana		TA05001
Bamboo Terra		TA04001





AMORIM

Excellence in flooring



- |                                                                                     |                                                                                            |
|-------------------------------------------------------------------------------------|--------------------------------------------------------------------------------------------|
| <b>NL/BE/LU</b> Amorim Benelux B.V., (+31) 166 604 111.....info.ar.nl@amorim.com    | <b>CN</b> Amorim Revestimentos, Macau, (+85) 366 625 06.....mario1104@hotmail.com          |
| <b>DE</b> Amorim Deutschland GmbH, (+49) 4221 59 301.....germany.ar.de@amorim.com   | <b>JP</b> Amorim Japan Corporation, (+81) 03 557 569 09.....amorimjapan.ar@amorim.com      |
| <b>AT</b> Amorim Flooring Austria, (+43) 1 545 16 51 0.....austria.ar.de@amorim.com | <b>DK</b> Timberman Denmark A/S, (+45) 99 525 252.....timberman@timberman.dk               |
| <b>CH</b> Amorim Flooring (Switzerland) AG, (+41) 41 726 20 20.....info@amorim.ch   | <b>PL</b> Dom Korkowy, Sp. z o.o., (+48) 12 637 9639.....krakow@domkorkowy.pl              |
| <b>ES</b> Amorim Revestimentos, S.A., (+34) 902 307 407 .....info.ar.es@amorim.com  | <b>US/CA</b> Amorim Flooring North America, (+1) 410 553 6062.....info.ar.us@amorim.com    |
| <b>FR</b> Amorim Revestimentos, S.A., (+33) 800 914 848.....geral.ar@amorim.com     | <b>HeadQuarters</b> Amorim Revestimentos, S.A., (+351) 22 747 5600.....geral.ar@amorim.com |

[www.wicanders.com](http://www.wicanders.com)

